

Better Homes and Gardens Special Interest Publications.

Ideas for Your Home

Remodel

Cash In
On Tax
Credits
p. 42

Perfect Kitchens

The Best Looks,
Floor Plans & Features

Powder Room Makeover
For Under \$600 p. 22

**The Ultimate
Flooring Guide** p. 27

**Fit a Mudroom
In Any Home** p. 16

March 2010
Display until March 2

\$5.99 U.S.





What's Your Kitchen Profile?

Your kitchen should reflect the look you love and the life you lead. Each kitchen in this section represents a profile—a unique set of style tastes and lifestyle needs. See which one fits you best, or draw ideas from all five to create your profile.

KITCHEN PROFILE 1



Contemporary amenities dressed in traditional design elements fit this Connecticut kitchen to a couple with young children—and old tastes.



Today's Traditionalist

You like a fairly formal kitchen that's full of architectural details yet family friendly, too—a pretty space that's practical for real life.

WRITTEN BY MARA BOO PHOTOGRAPHED BY TRIA GIOVAN PRODUCED BY CYNTHIA BOGART

smart strategy

A mantel-style hood gives this modern cooking area a traditional hearth look and provides both prominent display space and covert storage.





it was love at first sight for the owners of this classic 1920s Georgian home, partly because its exterior reminded them of the place they were married. Once inside the home's gracious doors, however, the couple were less than smitten.

"It was beautiful, but this house had been built for another time," architectural designer Louise Brooks says. "The formal living room, the 'dad's den,' and the utilitarian kitchen didn't provide comfortable places for a family to gather."

Square footage wasn't lacking, but it was in the wrong places. "It's a significant-size house with generously proportioned rooms," Brooks says. "Even so, the existing kitchen simply was not large enough to accommodate all of the amenities this young family was looking for."

Clearly, an addition was required. It was equally clear that the addition needed to respect the character and scale of the original rooms. That meant eschewing a typical kitchen and

great-room setup. "One vast, open kitchen and family room space would not have felt like an extension of the original house," Brooks says. "It would have been inappropriately modern."

Instead, Brooks designed a new kitchen with dedicated spaces for food prep, family gathering, and informal dining. Each area expresses the charm and architectural richness of the original house. "I took my inspiration from the house," Brooks says. "This was all about being consistent with the details, from old to new."

Inset beaded cabinet doors echo those found in other rooms, shell-shape corner shelves mimic dining room built-ins, and windows laced with millwork recall the entry transom. Glass-front cabinets and thick marble counters confer period authenticity, while stainless-steel appliances add a modern counterpoint. Oak-plank flooring grounds the rooms and brings warm natural color to the mostly white space.

OPPOSITE A hearthlike hood frames the professional-style range, enhancing the traditional look. A recessed niche within the subway-tiled alcove provides a focal point and additional display space.

ABOVE Though large, the highly efficient work space functions much like a galley kitchen, saving steps and effort during meal prep. Glass-front cabinet doors inject traditional charm.



Pantry Pointers

Though the walk-in pantry, *above*, boasts a 1920s vibe, architectural designer Louise Brooks equipped it to handle modern storage needs, including pet food, kids' snacks, bulk buys, and low-use countertop appliances. Here are some tips on planning a walk-in pantry.

- **Don't make it too big.** If it's too roomy, it becomes a catch-all. Think powder-room size with just enough space to stand and turn.
- **Tailor shelving** to the items you store so they're easy to see and reach. Flexible-height shelves let you adapt to changes easily.
- **Location is key.** Close to the refrigerator is best so you don't have to make trips all over the kitchen to gather meal ingredients.



online exclusive



Need better food storage? Find the perfect pantry for your kitchen's floor plan and style at BHG.com/remodeling.

Enhancing the stay-awhile appeal is the sitting area, which occupies prime real estate that could have been assigned to a dining table. The homeowners instead opted for a casual, comfortable spot that encourages their three sons—all under the age of 8—to play right in the kitchen while their parents prepare meals. An adjacent breakfast nook lets the family gather in style and comfort, pairing a child-friendly banquette with a virtually indestructible antique dining table. There's plenty of room for the kids and their friends. "You can squeeze in a lot of little boys on that banquette," says interior designer Ellen Watson, who wisely laminated the bench cushion fabric to withstand spills.



The sensitive addition melds traditional lines and modern amenities to fit a 1920s home to a family of today.

Brooks, meanwhile, repurposed the old kitchen space. "Redirecting the back staircase to the center of the former kitchen freed space for the office, butler's pantry, and mudroom," she says. "Now the three spaces pinwheel around the staircase, which we enlarged and amplified." Steps descend into the new kitchen, enabling its ceiling height to stretch from 8 feet to a welcome yet restrained 9 feet.

"Everything is in keeping with the scale of the original house," Brooks says. "The kitchen is obviously bigger than it was originally, but not ridiculously so. It's just big enough to meet the needs of today."

RESOURCES ON PAGE 114

ABOVE LEFT In lieu of extra cabinets, architectural designer Louise Brooks added a walk-in pantry. "It's more efficient to walk into a space than to reach up to get what you need," she says. The pantry includes a second refrigerator for the children's beverages and snacks.

ABOVE Corner built-ins blend high-profile display with discreet drawer storage.

TAKE IT HOME

Traditional Transformers

This traditional kitchen's standout features inspired our product picks for getting the look in your home.



LEGACY LIGHTING

The sparkle of lantern-style fixtures over an island conveys the traditional elegance of English antiques. Fluted-column pendant (\$206.99). Restoration Hardware; 800/910-9836; restorationhardware.com



MAJESTIC MARBLE

Nothing says traditional in a kitchen like beautiful marble countertops. Calcutta gold marble tile (\$15 per square foot). Midwest Tile; 888/818-6864; midwesttile.com



SIGNATURE SINK

The apron-front design is timeless. RC3018 Shaws Farmhouse Sink (\$1,295). Rohl; 800/777-9762; rohlhome.com

smart strategy

Pairing a traditional table and chairs with banquette bench seating adds family-friendly flexibility to the spacious breakfast nook.





OPPOSITE Embellished transom windows envelop the cozy breakfast nook, one of the kitchen's most family-friendly features. Banquette seating bolsters the table and chairs, bringing everyone together for meals.

LEFT Cornflower blue accents soften the sitting area. Floor-to-ceiling French doors provide access to the outdoor dining terrace and fill the kitchen with light.

PROBLEM

The kitchen of an architecturally rich 1920s Georgian home was not large enough to accommodate all of the amenities a young family was looking for, such as an island, a sitting area, and an informal dining area.

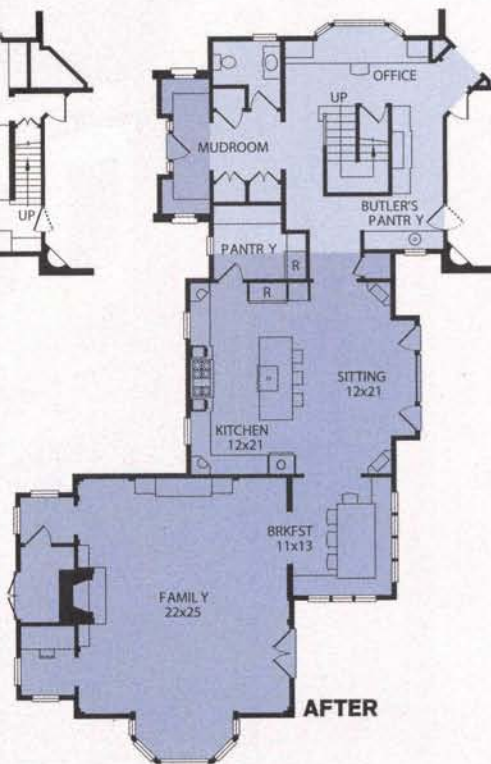
SOLUTIONS

- **An L-shape addition** provided space for a new kitchen, sitting area, breakfast nook, and family room.
- **Relocating a back staircase** allowed the existing kitchen space to be divvied up into a butler's pantry, home office, and mudroom.
- **A step-down transition** into the new kitchen enabled its ceiling to stretch to a more comfortable 9 feet.
- **Borrowed details** from the original home tie the new space to the traditional architecture of the existing rooms.
- **Opening the kitchen** to a spacious sitting area lets a couple keep young children in sight during meal prep.
- **Expansive windows** throughout the new space boost natural light and connections to the outdoors.



BEFORE

- Change
- Addition



AFTER